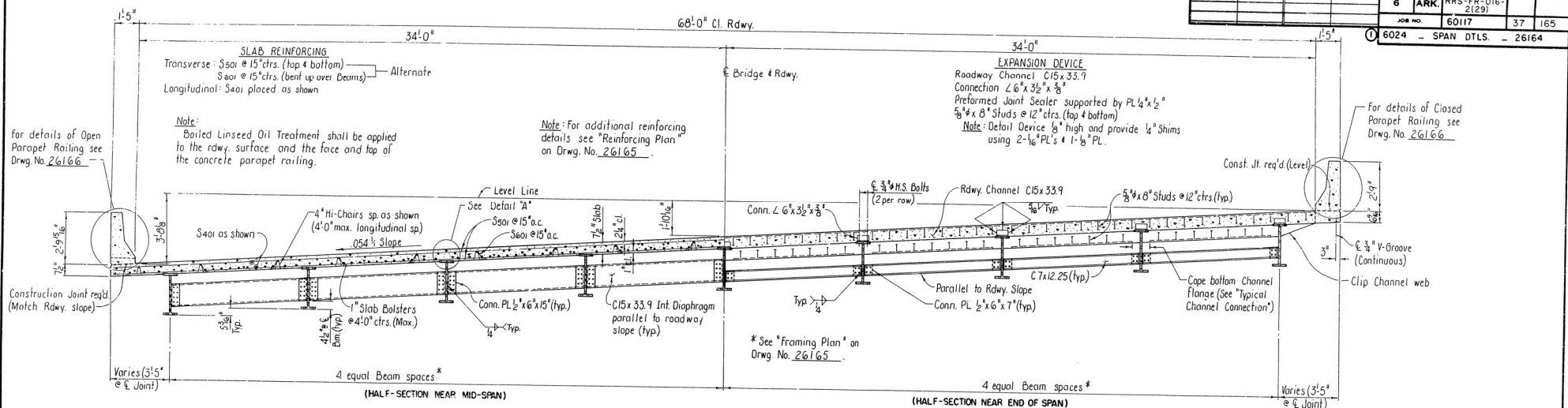


DATE	DATE	DATE	DATE	REV.	STATE	FED. AID PROJ. NO.	SHEET	TOTAL
REVISED	PLD	REVISED	PLD	NO.	ARK.	RRS-FR-016-2(29)	37	165
						6017	37	165
						6024 - SPAN DTLS.	26164	



TYPICAL ROADWAY SECTION (LOOKING AHEAD)
Scale: 1/4" = 1'-0"

GENERAL NOTES

ALL STRUCTURAL STEEL SHALL BE PAID FOR AT THE PRICE BID PER POUND FOR "STRUCTURAL STEEL IN BEAM SPANS (A36)".

THIS DRAWING TO BE USED WITH DRAWING NO. I49906.

LOADING: HS20

DESIGN SPECIFICATIONS: AASHTO 1977 WITH CURRENT INTERIMS.

DEAD LOAD:	INTERIOR BEAM	EXTERIOR 1/2" IN
a. TO WF BEAM	758 #/H, 301#/FT OF WF	712 #/H, 301#/FT OF WF
b. TO COMPOSITE BEAM*	206 #/ (OPEN BARRIER) 209 #/ (CLOSED BARRIER)	270 #/ (OPEN BARRIER) 278 #/ (CLOSED BARRIER)

LIVE LOAD:
TO EACH COMPOSITE BEAM 1,455 WHEELS + IMPACT 1,333 WHEELS + IMPACT

CLASS (SIAE) CONCRETE (w=9) f_c = 3500 PSI

STRUCTURAL STEEL (A36) f_y = 36,000 PSI

REINFORCING STEEL (A615, GRADE 60) f_y = 60,000 PSI

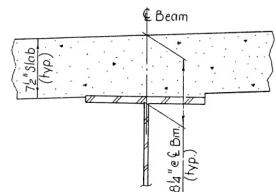
BEAM AND COVER PLATES SHALL BE A36. ALL OTHER STRUCTURAL STEEL SHALL BE A36.

ALL REINFORCING STEEL SHALL BE A615 OR A617, GRADE 60.

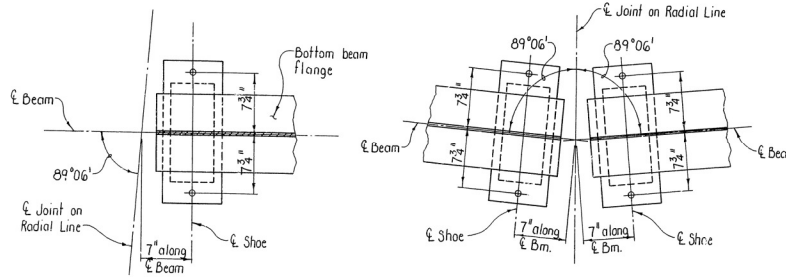
*INCLUDES 18"/FT FUTURE SURFACE.

ALL W-BEAMS AND COVER PLATES ARE CONSIDERED MAIN LOAD CARRYING MEMBERS AND SHALL MEET THE LONGITUDINAL CHARTY V-NOTCH TEST SPECIFIED IN SECTION 807.05 OF THE STANDARD SPECIFICATIONS.

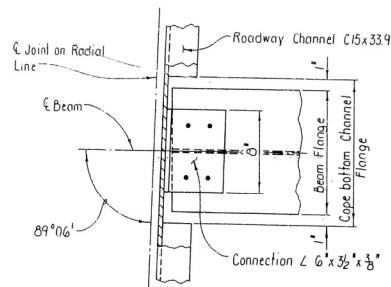
METHOD OF DESIGN: LOAD FACTOR



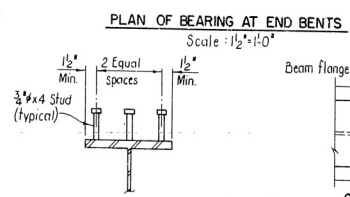
DETAIL "A"
No Scale



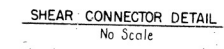
PLAN OF BEARING AT INTERMEDIATE BENTS
Scale: 1/2" = 1'-0"



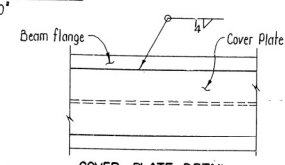
TYPICAL CHANNEL CONNECTION
No Scale



PLAN OF BEARING AT END BENTS
Scale: 1/2" = 1'-0"



SHEAR CONNECTOR DETAIL
No Scale



COVER PLATE DETAIL
No Scale

Note: Stud Shear Connectors shall be 3/4" x 4" long, granular flux filled, solid fluxed, or equal, and automatically end welded to beam flanges in accordance with manufacturer's recommendations. 3/4" studs may be substituted for 1/2" x 4" studs shown at the ratio of 0.75 - 3/4" studs in place of 1 - 1/2" x 4" stud. The 3/4" studs shall be used as the basis of payment at 62 pounds per 100 studs.

SHEET 1 OF 2

DETAILS OF
45'-0" COMPOSITE W-BEAM SPANS
FOR BRIDGE OVER COVE CREEK
HOT SPRING COUNTY

ROUTE 51 SEC. 4
ARKANSAS STATE HIGHWAY COMMISSION
LITTLE ROCK, ARK.

DESIGNED BY: KMG DATE: 24 JUNE 83
CHECKED BY: DHM DATE: 2/1/82
BRIDGE NO. 6024 DRAWING NO. 26164